

Two-piece obturator prosthesis for hemi-maxillectomy patient



Before

Two-piece obturator prosthesis is an alternative management to the conventional acrylic resin obturator prosthesis for the patient with severe trismus as the patient could not insert a large prosthesis in the mouth. The use of flexible or resilient material affords the opportunity to engage in undercut areas, needed to help in the retention of the prosthesis, without causing trauma to the soft, often sensitive, and easily irritable tissues.



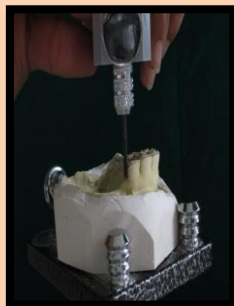
After



Defect after left hemi-maxillectomy



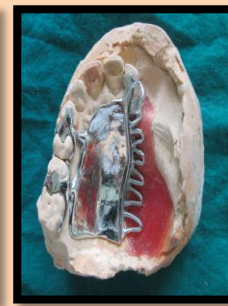
Primary impression with alginate



Surveying of primary cast



Final impression



Fabrication of metal framework



Impression for recording the defect area



Beading and boxing the impression



Fabrication of altered cast



Trial denture



Dewaxing the denture



Cellophane sheet used for separation of denture and obturator part



Processed denture with key way and obturator prosthesis with key



Bulb relined with permanent soft liner



Tissue surface of the obturator



Bulb inserted in the defect area



Two piece prosthesis inserted inside the mouth



Prosthesis in occlusion